



INSPIRING PACKAGING RECYCLING



Extended
Producer
Responsibility
Alliance

FOREWORDS

Today, within Europe and globally, the linear “take-make-waste” patterns of production and consumption are considered to have had detrimental effects in relation to climate change, resource efficiency and environmental protection. The solution to these challenges is a circular economy where resources are used in an efficient and sustainable way. The Extended Producer Responsibility (EPR) is an essential part of this approach which the European Commission has recognised in the recently published Circular Economy Package.

The Extended Producer Responsibility Alliance (EXPRA) currently embraces 27 members from 25 countries. These include 17 EU Member States (Belgium, Bulgaria, Cyprus, Czech Republic, Estonia, Finland, Greece, Hungary, Italy, Luxembourg, Malta, the Netherlands, Romania, Slovakia, Slovenia, Spain and Sweden), Bosnia and Herzegovina, Canada, Iceland, Israel, Macedonia, Norway, Turkey, and Chile. Every year, our members, on behalf of the obliged industry, recover and recycle over 18 million tons of packaging, and provide over 210 million inhabitants with packaging collection, sorting and recycling infrastructure.

EXPRA's members, owned and run by the obliged companies, offer waste management solutions based on the EPR principle. In so doing, they operate on a not-for-profit model since their activities are driven by the industry's public service mission of acting in a socially-responsible manner. This allows EXPRA to deliver services of general economic interest that are both cost and resource-efficient.



**Oscar
Martin**
President of
EXPRA
CEO Ecoembes



**Joachim
Quoden**
Managing Director
EXPRA



**Monika
Romenska**
Regulatory &
Public Affairs
Manager

Over the past four years, EXPRA has become THE voice of EPR schemes in Europe. Our organisation has been recognised as a key stakeholder by the EU institutions, the obliged industry, business associations and NGOs alike. EXPRA has developed studies and position papers aimed at sharing expert knowledge with European audiences, including policy-makers, in the field of both EPR and packaging waste management.

This brochure explains EXPRA's principles and values, its structure and activities. It also provides key facts and figures relating to members' activities as well as EPR best practice.

We would like to thank everyone involved in the production of this publication, which, we hope, you will find of interest.

EXPRA BOARD OF DIRECTORS



The Board of EXPRA is made up of 8 representatives of the members and is responsible for the overall strategic direction of EXPRA and overseeing its operations to ensure they fulfill the obligations of the Mission of EXPRA:

‘To be the umbrella organisation of not-for-profit producer responsibility organisations dealing with used, mainly household, packaging which is owned by the obliged industry. It aims to act as the authoritative voice and common policy platform representing the interests of its member organizations, and to run a network for the exchange of best practices within its members. Finally, it is the promoter of the EPR golden rules and works on the implementation of these rules into European and national legislation.’

The members of the Board are elected for a 2 year period and are led by a President and supported by the work of the Managing Director, who is also member of the Board. The Board receives updates from each of the work stream committees on a regular basis to maintain full oversight of the developments relating to the environments the members operate in.

PRESENTATION OF THE BOARD OF EXPRA



Oscar Martin
EcoEmbres



Joachim Quoden
Managing Director
EXPRA



Hester Klein
Lankhorst
Afvalfonds
Verpakkingen



Patrick Laeverts
Fost Plus



Zbynek Kozel
EKO-KOM



Claude Turping
Valorlux



Valter Facciotto
CONAI



Mario Schembri
Greenpak



Jaana Røine
Grønt Punkt Norge

EXPRA MEMBERS



EXPRA members, owned by obliged industry and operating on non for profit basis, work to ensure that the recovery and recycling of packaging waste is conducted in the most economically efficient and ecologically sound manner.

Over the past 25 years, EXPRA 27 members across 25 countries, including 17 EU Member States, have co-organised the collection, sorting and recycling of used packaging (with a focus on household packaging) on behalf of the obliged industry.

Thus In so doing, they fulfil their legal take-back and recycling obligations, serving over 210 million inhabitants and recycling over 18 million tons of packaging per year. EXPRA members also support them on issues related to packaging sustainability.

PRESENTATION OF EXPRA MEMBERS



BELGIUM
Fost Plus
Patrick Laeverts



BELGIUM
VAL I PAC
Francis Huysman



BULGARIA
ECOPACK Bulgaria
Alexander Urmanov



B&H
EKOPAK
Amela Hrbat



CANADA
Eco-Entreprises Québec
Maryse Vermette



CYPRUS
Green Dot Cyprus
Marios Vrahimis



CZECH REPUBLIC
EKO-KOM
Zbynek Kozel



ESTONIA
ETO
Siret Kivilo



FINLAND
RINKI
Juha-Heikki
Tanskanen



GREECE
HERRCO
Yiannis Razis



HUNGARY
Öko Pannon
Beata Gonci



ICELAND
IRF
Ólafur Kjartansson



ISRAEL
TAMIR
Rani Adler



ITALY
CONAI
Walter Facciotto



LUXEMBURG
Valorlux
Claude Turping



MACEDONIA
Pakomak
Filip Ivanovski



MALTA
GreenPak
Mario Schembri



NORWAY
Grønt Punkt
Jaana Røine



ROMANIA
ECO-ROM Ambalaje
Bogdan Ureche



SLOVAKIA
ENVI-PAK
Hana Novakova



SLOVENIA
Slopak
Srečko Bukovec



SPAIN
EcoEmbes
Oscar Martin Riva



SPAIN
Ecovidrio
José Manuel
Nuñez-Lagos



SWEDEN
FTI
Helena Nylén



NETHERLANDS
Nedvang
Hester Klein
Lankhorst



TURKEY
CEVKO
Mete İmer

PRESENTATION OF EXPRA MEMBERS



BELGIUM



BELGIUM



BULGARIA



B&H



CANADA



CYPRUS



FINLAND



GREECE



HUNGARY



ICELAND *



ISRAEL



ITALY



LUXEMBURG



MACEDONIA



MALTA



NORWAY



ROMANIA



SLOVENIA



SLOVAKIA



SPAIN



SPAIN



SWEDEN



NETHERLANDS



TURKEY

* Detailed information on IRF, Iceland will follow shortly

BEST PRACTICES FOR PACKAGING EPR



Below you will find an outline for how EPR organisations can achieve the best environmental and economic results.

The of Extended Producer Responsibility (EPR) is based on the principle that so-called 'obliged companies' take responsibility for the end-of-life management of the products they put on the market. For (household) packaging, EPR ensures that the entire packaging chain is optimized and that packaging is developed in a more sustainable manner.

To achieve the best results - both economically and environmentally - the EPR organisation should be owned by the obliged companies and run on a not-for-profit basis. The table below outlines what EXPRA considers as ten key principles for EPR.

BEST PRACTICES FOR PACKAGING EPR

1.

The essence of EPR is the producer's responsibility for a product throughout its life cycle

6.

Successful EPR must be based on a partnership between public authorities and EPR providers

2.

EPR compliance schemes should be run and steered by the obliged companies

7.

There should be a level playing field for the provision of EPR services in a given territory

3.

EPR compliance schemes should be not-for-profit / profit-not-for-distribution

8.

Obliged companies should receive equal treatment and share the allocation of EPR costs

4.

Collectors, sorters or recyclers of waste should not be active as EPR systems

9.

The industry-owned EPR organisation should pursue a public service mission

5.

There should be a strong EPR legal framework enforced by public authorities

10.

EPR organisations should support obliged companies to improve the environmental performance of their products and packaging

BEST PRACTICES FOR PACKAGING EPR

1.

THE ESSENCE OF EXTENDED PRODUCER RESPONSIBILITY (EPR)

According to the Organisation for Economic Co-operation and Development (OECD), EPR is “an environmental policy approach in which a producer’s responsibility for a product is extended to the postconsumer stage of a product’s life cycle”.

It means that companies who put products on the market are obliged to collect and recycle these products and their packaging once they have reached their end-of-life stage. In this sense, it can be seen as a practical way of implementing the ‘producer pays principle’.

In order to ensure that the products and their packaging are appropriately dealt with once they become waste, the obliged companies set up an EPR organisation to finance, organise, and co-ordinate the collection and recycling of the waste, using the services of licensed waste management companies.

The obliged companies receive a mandate from the authorities to shift their individual responsibility to the EPR organisation, which then becomes responsible and organizes the practical implementation.

2.

THE EPR ORGANISATION SHOULD BE RUN AND CONTROLLED BY THE OBLIGED COMPANIES

The EPR organisation should be founded, run, financed and controlled by the obliged companies themselves. It is the best guarantee to ensure the lowest cost to society and that the scheme will be both sustainable and compliant with environmental and legal objectives.

When obliged companies financing the EPR organisation are sitting in the boards and committees of this organisation they have the control about the expenses for all operations of the EPR organisation and will keep them in their own interest to the necessary minimum.

Moreover, they can agree to dedicate funding to necessary long term projects like education campaigns to increase the long term performance of the system which would not be run in case of multiple systems competing just on price.

To achieve this, the obliged companies should not only pay a contribution to the EPR organisation, but they should also be actively represented in the EPR organisation.

BEST PRACTICES FOR PACKAGING EPR

3.

NOT-FOR-PROFIT ORGANISATION

The EPR organisation should be a not-for-profit or profit-not-for-distribution body. There are several reasons why this is the preferred structure:

- It ensures non-discrimination among all of the obliged companies. A distribution of profit to the founding members/shareholders would constitute discrimination against non-shareholders.
- It also ensures that small and medium size participants receive full and equal service and that the EPR organisation does not just focus on big clients.
- It ensures that every obliged company has a right to join the system and is not been refused.
- It ensures that the interests of the consumers/inhabitants are served and that general interest objectives such as education, prevention, and communication will be pursued. This is especially important in the case of household packaging. Any for-profit company will make all possible efforts to avoid these costs which are - on a short term scale - not necessary to fulfill the minimum targets of the respective legislation.

4.

WASTE MANAGEMENT COMPANIES AND/OR INVESTORS CANNOT BE EPR ORGANISATIONS AND VICE VERSA

The natural inclination of investors and waste management companies in an open market is to maximise profit and grow market share - a method that strives for the highest price per tonne of collected and recycled material. Moreover, investors and waste management companies have an interest in increasing the amount of packaging put on the market. This, of course, is contrary to the legal objectives of the waste hierarchy and thereby creates a conflict with serving the public interest.

The focus of the EPR organisation on the other hand is to fulfil the obliged company's obligations in the most efficient and effective way possible. In other words, at the lowest possible cost for the obliged companies and society in general. The EPR organisation should work in close collaboration with the local authorities and negotiate and tender in an open market for collection, sorting, and recycling services.

The legal framework should be set up in such a way that the role of waste management companies is focused on and restricted to the supply of the highest quality services. On the one hand, waste management companies should not interfere in the execution of the EPR. On the other, the EPR organisation should not enter into the collection, sorting, and recycling process itself. Both parties have a distinct and separate role to play in the fulfilment of the EPR - preferably based on a close partnership.

BEST PRACTICES FOR PACKAGING EPR

5.

STRONG GOVERNMENTAL SUPPORT AND MONITORING

Public authorities have a key role to play in the enforcement of the EPR.

The national legislation should not only create an effective and efficient legal framework for the implementation of the EPR, it should also dedicate the necessary resources to fulfill its objectives. In this respect, special and exclusive rights can be granted to a single EPR organisation. In any case the national legislator should set out clear and high criteria for the accreditation of EPR organisations.

In their auditing role, public authorities should enforce this legal framework so that it ensures a qualitative implementation of the EPR, i.e. by using meaningful enforcement procedures to close loopholes and trace free riders. The public authorities should also develop a sound supporting policy. A compulsory Pay-As-You-Throw (PAYT) system on residual household waste can for example work as an incentive for the inhabitants to sort their household packaging waste. They should also refrain from establishing any counter-productive regulations or measures such as packaging taxes and deposit schemes which could impede the execution of the EPR.

6.

ROLE OF MUNICIPALITIES/LOCAL AUTHORITIES

A close partnership between the local authorities and the EPR organisation, based on mutual trust, is a condition sine qua non for the success and the environmental sustainability of the EPR.

Municipalities have several roles to play. Many of these roles depend upon the product/waste flow itself.

For example, when the flow concerns household packaging for high-volume, fast moving consumer goods, municipalities play an important role in the set-up and management of door-to-door collections and/or bring or collection point centers.

In this respect, local authorities and the EPR organisation have to agree on the most appropriate collection system, taking into account both local particularities and conformity with national and European requirements.

The local authorities and the EPR organisation should also actively cooperate in local public communication and awareness programmes, data gathering and monitoring, the control of the waste management operators, and the tendering for collection services.

BEST PRACTICES FOR PACKAGING EPR

7.

SINGLE OR MULTIPLE EPR ORGANISATIONS?

Having a single EPR organisation responsible for a national territory - organising the collection and recycling of a product category for all obliged companies within national boundaries - has many advantages.

A single EPR organisation ensures that:

- The government can execute effective and efficient control.
- Obligated companies are treated in a non-discriminatory manner.
- An efficient functioning of the market is created, enabling the lowest societal cost for collection, sorting and recycling.
- Effective national and local awareness and communication campaigns are run.
- Reliable data on the collection, sorting, and recycling of packaging waste can be obtained.

When multiple EPR organisations are in simultaneous operation, it should be noted that the principle of competition regarding the collection of household packaging seldom functions ideally.

This is because those who receive the service (inhabitants) do not choose the EPR organisation (which is selected by the obliged companies).

In countries with multiple EPR organisations - in some cases up to 40 in the same country - it has been observed that the organisations tend to cherry-pick. That means is, they concentrate on the easiest material to collect and recycle. Moreover, public authorities have greater difficulty monitoring the EPR organisations and the obliged companies and avoiding and penalizing free riding.

Also, for each authorized EPR organisation it becomes more or less impossible to monitor the reports of those obliged companies participating in their system as they might participate with remaining packaging in another EPR organisation. Therefore, usually the number of free riders in countries with multiple EPR organisations is higher than in a country with a single organisation.

Competition must however be assured at the level of the waste management activities, meaning on the level of collection, sorting and recycling, which represent over 80% of a successful EPR organisation's total cost.

In any case, EPR should never be reduced to a shopping list of a large number of so-called EPR organisations owned by waste operators and investors, making profits at the expense of and to the detriment of the obliged companies, the environment, and society in general.

BEST PRACTICES FOR PACKAGING EPR

8.

SUSTAINABLE FINANCING BASED ON JOINT FINANCIAL RESPONSIBILITY

The EPR organisation must be set up in such a way that all necessary finances are provided for an effective implementation in compliance with the legal framework. The financial contribution of the obliged companies should also be significant enough compared to the total cost. This gives them a strong position in discussions with local authorities regarding the most appropriate collection system to be employed.

The financial contribution of each obliged company must be calculated based upon the amount and type of packaging they put on the market and the real cost of operations - including awareness campaigns and potential revenues from the secondary raw material market. This ensures that all obliged companies receive equal treatment and share a fair allocation of the costs.

9.

PUBLIC SERVICE MISSION AND PROCUREMENT PROCEDURES

The EPR organisation should pursue - as part of its statutory purpose - a public service mission regarding the collection, recovery, and recycling of household packaging waste. This means the organisation should serve a higher purpose - realising an environmentally and economically sustainable recycling society, which benefits the inhabitants of the country.

In this respect, the EPR organisation should engage itself in raising awareness about sorting and recycling among the inhabitants and provide support for educational programmes. It should also develop adequate programmes and actions for 'away from home' consumption of household packaging waste.

The EPR organisation should implement transparent and efficient procurement procedures for contracting waste treatment operators such as collectors, sorters, and recyclers. It should observe the principles of equality and neutrality at all times.

BEST PRACTICES FOR PACKAGING EPR

10.

PACKAGING OPTIMISATION AND PREVENTION

The EPR organisation should help the obliged companies to improve the environmental performance of their products and their packaging by providing advice and information on packaging optimisation.

Packaging optimisation efforts include improved design of the combined product/packaging, guaranteeing the greatest functionality and longest life, while using safe materials and a minimum of raw materials and resources.

Through its co-ordination efforts, the EPR organisation functions as a 'bridge' between the obliged companies and the recyclers. This ensures that the obliged companies gain insight into the recyclability of their packaging and this enables them to take the end-of-life treatment into account during the design of the packaging.

REGULATORY AFFAIRS COMMITTEE

The regulatory Affairs Committee (RAC) stimulates uniform, high standard yet practical legislation in the field of packaging and packaging waste in Europe. The RAC analyses all legislation in Europe that has an effect on packaging and packaging waste management, and draws and executes strategic plans on the positioning EXPRA should take.

The RAC also exchanges information with producers and importers of packed products.



Romina Giovannetti
Ecoembes
Committee Chair



Amanda Fuso
Nerini
CONAI



Hana Novakova
ENVI-PAK



Beáta Gönci
Öko Pannon



Aurelia Lew
Fost Plus



Claude Turping
Valorlux



Sorin Dumitru
Eco Rom
Ambalaje



Eviropidis Dimou
HERRCo



Mario Schembri
GreenPak



Paul Christiaens
Afvalfonds
Verpakkingen



Sandra Anguiano
Ecovidrio

TECHNICAL WORKING GROUP

The Technical working group (TWG) stimulates the optimal functioning of collection, sorting and recycling of packaging waste on an operational and cost basis. The TWG gathers, pools and shares information on the collection, sorting and recycling of packaging waste. The information is shared with both members of EXPRA (best practices) and other stakeholders (demonstrated expertise), particularly the producers and importers of packed products.



Mike Jefferson

(Chair)



Amanda Fuso
Nerini
CONAI



Hana Novakova
ENVI-PAK



Filip Ivanovski
Pakomak



Laura Garcia
Campo
Ecovidrio



Mik Van Gaever
Fost Plus



Petr Balner
EKO-KOM



Rani Aidler
TAMIR



Roman Vandak
ENVI-PAK



Paul Christiaens
Afvalfonds
Verpakkingen



Vassilis Makridis
HERRCo

SUSTAINABILITY & PACKAGING WORKING GROUP

The Sustainability and Packaging working group (S&P WG) stimulates the activities of producers and importers of packed products towards the eco-design/design for recycling of their packaging. The S&P WG gathers, pools and exchanges information on the activities regarding packaging prevention. The information is shared with both members of EXPRA (best practices) and other stakeholders (demonstrated expertise), particularly with producers and importers of packed products. The Sustainability and Packaging working group looks to communicate information to stakeholders on eco-design innovations and examples of packaging prevention best practices.



Amanda Fuso Nerini
Conai
WG Chair



Claude Turping
Valorlux



Jorge Serrano
Pacheco
Ecoembes



Beata Gönci (silent)
Öko Pannon



Johannes Daae
Green Dot Norway



Ivana Pleskova
ENVI-PAK



Elise Laferrière
EEQ



Karen van der
Stadt
Nedvang/Kennis



Lieven Capon
Fost Plus

Merike Koger
ETO

DATA, REPORTING AND BENCHMARKING WORKING GROUP

The Data and Reporting Working Group (DRWG) aims to support the development of a level playing field in data, information and statistics on packaging and packaging waste. The DRWG gathers, pools, and analyses information about performance, operations and costs of extended producer responsibility for packaging. The information is shared with both members of EXPRA (best practices) and other stakeholders (demonstrated expertise), particularly producers and importers of packed products.



Paul Christiaens
Afvalfonds Verpakkingen
(Chair)



Petr Šiký
EKO KOM



Daniel Moradiellos Zapico
Eco Embes



Marte Ohnstad Kittilsen
GD Norway



Nadia Puttemans
Fost Plus



Alphan Erozturk
CEVKO



Tassos Arvanitis
Herrco

EXPRA MEMBERS



asbl Fost Plus vzw
Avenue des Olympiades 2
BE-1140 Brussel
T: +32 2 775 03 50
E: fostplus@fostplus.be
www.fostplus.be

BELGIUM

COUNTRY	BELGIUM
Name of the system	Fost Plus
Founded	1994
Scope of business	Household packaging
Number of authorized Household systems	1
Financial share of producer responsibility	full costs
Operational responsibility for collection	Local Authorities (usually via call for tender)
Operational responsibility for sorting	
Operational responsibility for marketing	Fost Plus
Number of contributing companies	4723
Income from obliged companies	124 million €
Coverage of the country (territory)	100 %
Number of inhabitants	11,4 mil
- with access to infrastructure	11,4 mil
Costs per included inhabitant	10,84 €
Cost average per recovered ton	165 €

BELGIUM

TOTAL AMOUNT OF PACKAGING PUT ON THE MARKET	881 kt

HH PACKAGING PARTICIPATING IN THE SYSTEM	789 kt
--	--------

TOTAL AMOUNT AND PERCENTAGE OF RECOVERY	750 kt = 85 %
Glass	326 kt = 100 %
Paper	193 kt = 87 %
Plastics	97 kt = 42 %
Composites (including PMD residue from the blue bags)	16 kt = 94 %
Tinplate	72 kt = 93 %
Aluminum	Included in tinplate

TOTAL AMOUNT AND PERCENTAGE OF RECYCLING	727 kt = 83 %
Glass	326 kt = 100 %
Paper	193 kt = 87 %
Plastics *mechanical recycling	97 kt = 42 %
Composites	16 kt = 94 %
Tinplate	72 kt = 93 %
Aluminum	Included in tinplate

TOTAL AMOUNT AND PERCENTAGE OF RECOVERY WITH INCINERATION	2,7%
---	------

TOTAL AMOUNT AND PERCENTAGE OF RECOVERY (RECYCLING + RECOVERY WITH INCINERATION)	n/a
--	-----



COLLECTION	
Glass	Collected via banks* *separated by color
Paper	Collected together with newspapers *mostly via curbside collection, but also collection stations
Plastics	Mostly by curbside collection with transparent bags
Beverage Cartons	*(Blue PMD bag) and also in some cases by container stations
Metal packaging	Idem (+ From MSW, recycling bottom ashes from incineration plants (all MSW is incinerated))

EXPRA MEMBERS



VAL-I-PAC

Avenue Reine Astrid 59 bte 11

1780 Wemmel

T: +32 (0)2 456 83 10

F: +32 (0)2 456 83 20

E: info@valipac.be

www.valipac.be

BELGIUM

COUNTRY	BELGIUM
Name of the system	Valipac
Founded	1997
Scope of business	Promote & coordinate the recycling of industrial packaging waste
Number of authorized Industrial systems	1
Financial share of producer responsibility	mixed
Operational responsibility for collection	Private waste collectors
Operational responsibility for sorting	Unpackers
Operational responsibility for marketing	Valipac
Number of contributing companies	5927
Income from obliged companies	13,4 mill €
Coverage of the country (territory)	100 %
Number of inhabitants	-
- with access to infrastructure	irrelevant
Costs per included inhabitant	n/a
Cost average per recovered ton	19 € / ton

BELGIUM

TOTAL AMOUNT OF PACKAGING PUT ON THE MARKET	750050 tons

HH PACKAGING PARTICIPATING IN THE SYSTEM	n/a
--	-----

TOTAL AMOUNT AND PERCENTAGE OF RECOVERY	88,8%
Paper	100 %
Plastics	88,7%
Metals	78,1%
Wood	100 %
Other	14,4 %

TOTAL AMOUNT AND PERCENTAGE OF RECYCLING	89,4 %
Paper	100 %
Plastics *mechanical recycling	53,9 %
Metals	78,1%
Wood	87,3%

TOTAL AMOUNT AND PERCENTAGE OF RECOVERY WITH INCINERATION	n/a
---	-----

TOTAL AMOUNT AND PERCENTAGE OF RECOVERY (RECYCLING + RECOVERY WITH INCINERATION)	n/a
--	-----



COLLECTION	
Glass	n/a
Paper	n/a
Plastics	n/a
Beverage cartons	n/a
Metal packaging	n/a

EXPRA MEMBERS



ECOPACK Bulgaria Jsc
60 Tzarigradsko Shousse Blvd.
1750 Sofia, Bulgaria
T: +359 2 401 91 00, +359 2 975 19 25
F: +359 2 401 91 01, +359 2 975 19 26
E: office@ecopack.bg
www.ecopack.bg

BULGARIA

COUNTRY	BULGARIA
Name of the system	ECOPACK
Founded	2004
Scope of business	All Packaging
Number of authorized Household systems	5
Financial share of producer responsibility	Full costs
Operational responsibility for collection	ECOPACK
Operational responsibility for sorting	ECOPACK
Operational responsibility for marketing	ECOPACK
Number of contributing companies	1154
Income from obliged companies	8,206 Mll EUR
Coverage of the country (territory)	33.20%
Number of inhabitants	6 951 482
- with access to ECOPACK infrastructure	2543 million.
Costs per included inhabitant	3,32 €
Cost average per recovered ton	79 €

EXPRA MEMBERS

TOTAL AMOUNT OF PACKAGING PUT ON THE MARKET	406 kt
(by ECOPACK clients)	170,114 kt
HH PACKAGING PARTICIPATING IN THE SYSTEM	13,323 kt
TOTAL AMOUNT AND PERCENTAGE OF RECYCLING	107,033 kt = 62,92%
Glass	24,869 kt = 60,11%
Paper	50,102 kt = 88,32%
Plastics	20,065 kt = 45,7 %
Composites	Included in paper
Tinplate	5,106 kt = 54,68%
Aluminum	Included in tinplate
Wood	6,891 kt = 49,77%

BULGARIA

TOTAL AMOUNT AND PERCENTAGE OF RECOVERY WITH INCINERATION	N/A
TOTAL AMOUNT AND PERCENTAGE OF RECOVERY (RECYCLING + RECOVERY WITH INCINERATION)	N/A



COLLECTION	
Glass	Green containers, no color separation
Paper	Blue containers
Plastics	Yellow containers
Beverage cartons	Included in blue containers
Metal packaging	Included in yellow containers

EXPRA MEMBERS

BOSNIA & HERZEGOVINA



ekopak

First licensed packaging recovery organisation
in Bosnia and Herzegovina.

EKOPAK d.o.o.

1Zmaja od Bosne 7-7a, Objekat 03/6 Importanne center

71000 Sarajevo, Bosnia and Herzegovina

T: 033 921 934

F: 033 921 935

E: info@ekopak.ba

www.ekopak.ba

COUNTRY	BOSNIA & HERZEGOVINA
Name of the system	Ekopak
Founded	2011 (Operational from May 2012)
Scope of business	PWM
Number of authorized Household systems	3
Financial share of producer responsibility	Full costs
Operational responsibility for collection	Local Authorities
Operational responsibility for sorting	Local Authorities
Operational responsibility for marketing	Ekopak / Marketing Agency
Number of contributing companies	800
Income from obliged companies	0,54million€
Coverage of the country (territory)	51%
Number of inhabitants	3,5 million
- with access to Ekopak infrastructure	250 k
Costs per included inhabitant	8,74€
Cost average per recovered ton	28,35 €

EXPRA MEMBERS

TOTAL AMOUNT OF PACKAGING PUT ON THE MARKET	150 kt
(by Ekopack clients)	n/a

HH PACKAGING PARTICIPATING IN THE SYSTEM	n/a
--	-----

TOTAL AMOUNT AND PERCENTAGE OF RECOVERY	
Glass	n/a
Paper	n/a
Plastics	n/a
Composites	193 t
Tinplate	n/a
Aluminum	n/a

TOTAL AMOUNT AND PERCENTAGE OF RECYCLING	
Glass	1,062 t
Paper	9,058 t
Plastics	1,451 t
Composites	n/a
Tinplate	n/a
Aluminum	263 t (METAL)

BOSNIA & HERZEGOVINA

TOTAL AMOUNT AND PERCENTAGE OF RECOVERY WITH INCINERATION	
COMPOSITES HAZARDOUS PACKAGING WASTE	

TOTAL AMOUNT AND PERCENTAGE OF RECOVERY (RECYCLING + RECOVERY WITH INCINERATION)	
--	--



COLLECTION	
Glass	1,275 t
Paper	11,775 t
Plastics	1,886 t
Beverage cartons	
Metal packaging	316 t

EXPRA MEMBERS



Éco
Entreprises
Québec

Éco Entreprises Québec
1600, René-Lévesque Blvd. West Suite 600
Montréal (Québec) H3H 1P9
Phone : 514 987-1491
E: service@ecoentreprises.qc.ca
www.ecoentreprises.qc.ca

CANADA

COUNTRY	CANADA
Name of the system	Éco Entreprises Québec*
Founded	2003
Scope of business	All Packaging
Number of authorized Household systems	1
Financial share of producer responsibility	Total net costs
Operational responsibility for collection	Municipalities
Operational responsibility for sorting	Municipalities
Operational responsibility for marketing	Sorting centers
Number of contributing companies	3100
Income from obliged companies	89 million €
Coverage of the country (territory)	99%
Number of inhabitants	8,5 million
- with access to infrastructure	8,43 million
Costs per included inhabitant	10,56 € / Inhabitant
Cost average per recovered ton (for containers and packaging only)	162 €

TOTAL AMOUNT OF PACKAGING PUT ON THE MARKET	771 kt
(thereof household packaging)	632 kt
HH PACKAGING PARTICIPATING IN THE SYSTEM	632 kt
TOTAL AMOUNT AND PERCENTAGE OF RECOVERY	446 kt = 58%
Glass*	138 kt = 79%
Paper packaging	176 kt = 65%
Plastics*	85 kt = 35%
Composites	22kt = 53%
Tinplate	Included in aluminium
Aluminum*	2 kt = 21%
Steel containers	23 kt = 62%
TOTAL AMOUNT AND PERCENTAGE OF RECYCLING	52 %
Glass	n/a
Paper	n/a
Plastics	n/a
Composites	n/a
Tinplate	n/a
Aluminum*	n/a

CANADA

TOTAL AMOUNT AND PERCENTAGE OF RECOVERY WITH INCINERATION	n/a
---	-----

TOTAL AMOUNT AND PERCENTAGE OF RECOVERY (RECYCLING + RECOVERY WITH INCINERATION)	n/a
--	-----



COLLECTION	
Glass	Curbside recycling collection
Paper	Curbside recycling collection *together with printed paper
Plastics	Curbside recycling collection
Beverage cartons	Included in paper
Metal packaging	Curbside recycling collection

*In Quebec, beer and soft drinks, either in glass, plastic or aluminum containers, are subject to a deposit system, thus excluded from curbside recycling compensation plan.

EXPRA MEMBERS

CYPRUS



Green Dot (Cyprus) Public Co Ltd
229 Tseriou Avenue, 2047 Strovolos, Nicosia
P.O.Box 25463 1310 Nicosia Cyprus
T: +357 22 586020
F: +357 22 586001
E: admin@greendot.com.cy
www.greendot.com.cy

COUNTRY	CYPRUS
Name of the system	Green Dot Cyprus
Founded	2004
Scope of business	All Packaging
Number of authorized Household systems	1
Financial share of producer responsibility	100%
Operational responsibility for collection	Green Dot Cyprus
Operational responsibility for sorting	Green Dot Cyprus
Operational responsibility for marketing	Green Dot Cyprus
Number of contributing companies	1167
Income from obliged companies	4,299,257 €
Coverage of the country (territory)	80%
Number of inhabitants	0,84 million
- with access to infrastructure	0,67 million
Costs per included inhabitant	9,34 €
Cost average per recovered ton	100 €

TOTAL AMOUNT OF PACKAGING PUT ON THE MARKET	100 kt
(thereof household packaging)	75 kt

HH PACKAGING PARTICIPATING IN THE SYSTEM	54 kt
--	-------

TOTAL AMOUNT AND PERCENTAGE OF RECOVERY	60,144 kt = 79%
Glass	8,852 kt = 47%
Paper	30,481 kt = 128%
Plastics	6,891 kt = 40%
Composites	n/a
Tinplate	8,518 kt = 243%
Aluminum	484 kt = 16%

TOTAL AMOUNT AND PERCENTAGE OF RECYCLING	57,238 kt = 75,3 %
Glass	8,852 kt = 47%
Paper	30,481 kt = 128%
Plastics *mechanical recycling	6,891 kt = 40%
Composites	n/a
Tinplate	8,518 kt = 243%
Aluminum	484 kt = 16%

CYPRUS

TOTAL AMOUNT AND PERCENTAGE OF RECOVERY WITH INCINERATION	n/a
---	-----

TOTAL AMOUNT AND PERCENTAGE OF RECOVERY (RECYCLING + RECOVERY WITH INCINERATION)	n/a
--	-----



COLLECTION	
Glass	Iglu stations, 1 bin/600 cap
Paper	Brown bags door to door* *together with newspapers magazines & office paper
Plastics	Transparent bag door to door
Beverage cartons	Transparent bag door to door
Metal packaging	Transparent bag door to door

EXPRA MEMBERS



EKO-KOM, a.s.

Na Pankráci 1685/17140 21 Prague 4

Czech Republic

T: +420 729 848 111

F: +420 729 848 119

E: info@ekokom.cz

www.ekokom.cz

CZECH REPUBLIC

COUNTRY	Czech Republic
Name of the system	EKO KOM
Founded	1997
Scope of business	Household and commercial
Number of authorized Household systems	1
Financial share of producer responsibility	Full costs for packaging waste (standardized costs)
Operational responsibility for collection	Local authorities
Operational responsibility for sorting	Local authorities
Operational responsibility for marketing	Local authorities
Number of contributing companies	21,197
Income from obliged companies	80,87 million €
Coverage of the country (territory)	
Number of inhabitants	10,69 million
- with access to infrastructure	10,63 million
Costs per included inhabitant	7,61 €
Cost average per recovered ton	89,15 €

TOTAL AMOUNT OF PACKAGING PUT ON THE MARKET	3,507,197 tons
(thereof household packaging)	n/a
HH PACKAGING PARTICIPATING IN THE SYSTEM	866 kt
TOTAL AMOUNT AND PERCENTAGE OF RECOVERY	907 kt = 73%
Glass	184 kt = 79%
Paper	448 kt = 88%
Plastics	173 kt = 69%
Composites	Included in paper (BC) & plastics
Tinplate	37 kt = 57%
Aluminum	Included in tinplate
TOTAL AMOUNT AND PERCENTAGE OF RECYCLING	907 kt = 73%
Glass	184 kt = 79%
Paper	448 kt = 88%
Plastics	173 kt = 69%
Composites	Included in paper (BC) & plastics
Tinplate	37 kt = 57%
Aluminum	Included in tinplate

CZECH REPUBLIC

TOTAL AMOUNT AND PERCENTAGE OF RECOVERY WITH INCINERATION	n/a
---	-----

TOTAL AMOUNT AND PERCENTAGE OF RECOVERY (RECYCLING + RECOVERY WITH INCINERATION)	n/a
--	-----



COLLECTION	
Glass	Container stations* *color separation
Paper	Collected together with newspapers* *container stations
Plastics	Container stations
Beverage Cartons	Container stations* included in paper
Metal packaging	Collected via recycling stations* *collection usually via recycling stations run by local authorities, partly collected via container stations

EXPRA MEMBERS



Eesti Taaskasutusorganisatsioon MTÜ
 Mustamäe tee 24 10621 Tallinn Estonia
 T: +372 640 32 40
 F: + 372 640 32 48
 E: eto@eto.ee
 www.eto.ee

ESTONIA

COUNTRY	ESTONIA
Name of the system	Eesti Taaskasutusorganisatsioon MTÜ (ETO)
Founded	2004
Scope of business	All Packaging
Number of authorized Household systems	3
Financial share of producer responsibility	30%
Operational responsibility for collection	Waste management companies via tenders
Operational responsibility for sorting	
Operational responsibility for marketing	ETO system
Number of contributing companies	1020
Income from obliged companies	3 830 451 €
Coverage of the country (territory)	99%
Number of inhabitants	1 328 976 (2020)
- with access to infrastructure	1 315 686
Costs per included inhabitant	2,87 €
Cost average per recovered ton	131,01 €

TOTAL AMOUNT OF PACK AGING PUT ON THE MARKET	45 911 t
(thereof household packaging)	59%
HH PACKAGING PARTICIPATING IN THE SYSTEM	99%
TOTAL AMOUNT AND PERCENTAGE OF RECOVERY	28 525,617t = 62,13%
Glass	4 542,754t = 73,2%
Paper	11 227,774t = 70,75%
Plastics	5 827,592t = 58,83%
Composites	not collected separately
Tinplate	1 157,361t = 62,52%
Aluminum	Included In tinplate
Wood	n/a
TOTAL AMOUNT AND PERCENTAGE OF RECYCLING	28 525,617 t = 55,6%
Glass	4 542,754 t = 73,2%
Paper	11 227,774t = 70,75%
Plastics* <small>*mechanical recycling</small>	5 827,592t = 58,83%
Composites	not collected separately
Tinplate	1 157,361t = 62,52%
Aluminum	Included In tinplate
Wood	n/a

ESTONIA

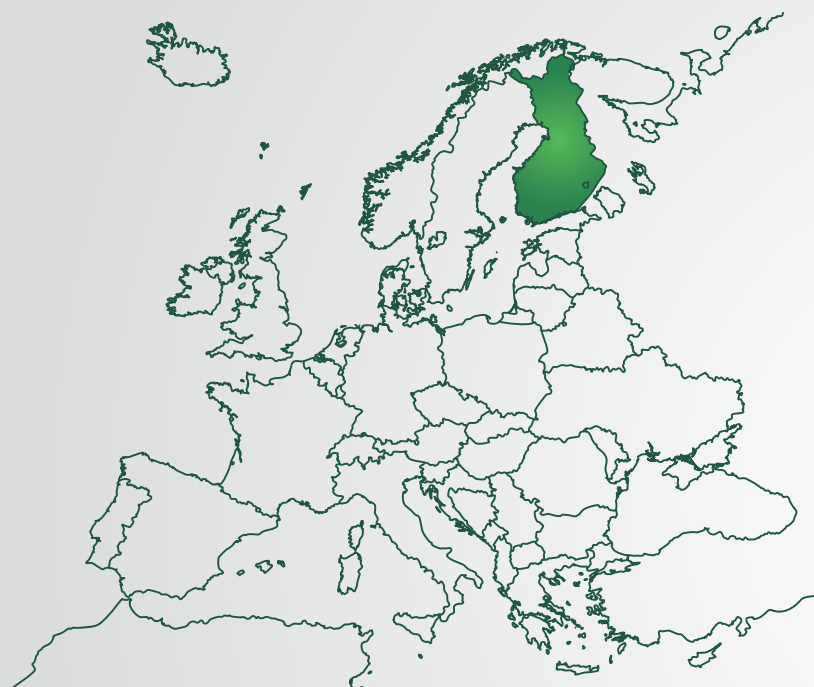
TOTAL AMOUNT AND PERCENTAGE OF RECOVERY WITH INCINERATION	n/a
--	-----

TOTAL AMOUNT AND PERCENTAGE OF RECOVERY (RECYCLING + RECOVERY WITH INCINERATION)	n/a
--	-----



COLLECTION	
Glass	Green containers
Paper	Blue containers
Plastics Bottles	Yellow container
Flasks, Beverage	Yellow container
Metal packaging	Yellow containers

EXPRA MEMBERS



Finnish Packaging Recycling RINKI Ltd

Tynnyrintekijänpäätie 1 C

FI-00580 HELSINKI, Finland

T: +3589 616 230

E: info@rinki.fi

<http://www.rinki.fi>

FINLAND

COUNTRY	FINLAND
Name of the system	Finnish Packaging Recycling RINKI Ltd
Founded	1997
Scope of business	Consumer packaging collection
Number of authorized Household systems	1
Financial share of producer responsibility	100 %
Operational responsibility for collection	RINKI, local authorities, private waste management companies
Operational responsibility for sorting	RINKI, local authorities
Operational responsibility for marketing	RINKI and Producer organizations
Number of contributing companies	4500
Income from obliged companies	24,2 million
Coverage of the country (territory)	100 % (excluding Åland)
Number of inhabitants	5,5 million
- with access to infrastructure	5,5 million
Costs per included inhabitant	4,4 €
Cost average per recovered ton	n/a

TOTAL AMOUNT OF PACKAGING PUT ON THE MARKET (2015)	742,445 t (2018)
HH PACKAGING PARTICIPATING IN THE SYSTEM	not reported
TOTAL AMOUNT AND PERCENTAGE OF RECOVERY (2015)	n/a
Glass	n/a
Paper	n/a
Plastics	n/a
Composites	n/a
Tinplate	n/a
Aluminum	n/a
Metals	n/a
TOTAL AMOUNT AND PERCENTAGE OF RECYCLING (2015)	520 789 t = 70 %
Glass	79 251 t = 99%
Paper	300 094 t = 116%
Plastics* <small>*mechanical recycling</small>	42 008 t = 31%
Composites	Included In paper
Metals	46 660 t = 90%
Tinplate	Included In metals
Aluminum	Included In metals

FINLAND

TOTAL AMOUNT AND PERCENTAGE OF RECOVERY WITH INCINERATION	n/a
---	-----

TOTAL AMOUNT AND PERCENTAGE OF RECOVERY (RECYCLING + RECOVERY WITH INCINERATION)	n/a
--	-----



COLLECTION	
Glass	Curbside collection & recycling stations
Paper	Curbside collection & recycling stations
Plastics bottles and Flasks	Curbside collection & recycling stations
Beverage cartons	Together with paper
Metal packaging	Curbside collection & recycling stations

EXPRA MEMBERS



HERRCO (Hellenic Recovery & Recycling Corporation)
 Himaras 5
 Maroussi 15125, Greece
 T: 00 30 210 8010962/ 963
 F: 00 30 210 8012272
 E: info@herrco.gr
www.herrco.gr

GREECE

COUNTRY	GREECE
Name of the system	Herrco
Founded	1991
Scope of business	All Packaging
Number of authorized Household systems	3
Financial share of producer responsibility	Additional costs
Operational responsibility for collection	Local Authority
Operational responsibility for sorting	Herrco
Operational responsibility for marketing	Herrco
Number of contributing companies	2,586 (31-12-2019)
Income from obliged companies	19,5 million €
Coverage of the country (territory)	10,1 million
Number of inhabitants	n/a
- with access to infrastructure	9,7 million
Costs per included inhabitant	2,0 €
Cost average per recovered ton	43,37 €

TOTAL AMOUNT OF PACK AGING PUT ON THE MARKET	808,000 t
HH PACKAGING PARTICIPATING IN THE SYSTEM	~50%
TOTAL AMOUNT AND PERCENTAGE OF RECOVERY	n/a
Glass	31,826 = 43%
Paper	307,168 = 199%
Plastics	79,600 = 75%
Composites	Included In paper
Tinplate	56,261 = 295%
Aluminum	7,519 = 44 %
Wood	15,174 = 73%
TOTAL AMOUNT AND PERCENTAGE OF RECYCLING	n/a
Glass	31,826 = 43%
Paper	307,168 = 199%
Plastics	79,600 = 75%
Composites	Included in paper
Tinplate	56,261 = 295%
Aluminum	7,519 = 44 %
Wood	15,174 = 73%

GREECE

TOTAL AMOUNT AND PERCENTAGE OF RECOVERY WITH INCINERATION	808,000 t
---	-----------

TOTAL AMOUNT AND PERCENTAGE OF RECOVERY (RECYCLING + RECOVERY WITH INCINERATION)	n/a
--	-----



COLLECTION	
Glass	Co-mingled collection - blue container* *separate bin
Paper	Co-mingled collection - blue container
Plastics	Co-mingled collection - blue container
Beverage cartons	Co-mingled collection - blue container
Metal packaging	Co-mingled collection - blue container

EXPRA MEMBERS



ÖKO-Pannon Nonprofit Kft.
1146 Budapest
Hungária krt. 179-187, Hungary
T: +36-1-383-9305
F: +36-1-383-9306
E: info@okopannon.hu
www.okopannon.hu

HUNGARY

COUNTRY	HUNGARY *
Name of the system	Öko Pannon
Founded	1996
Scope of business	Lobbying for EPR solution from 2012 (formerly all packaging)
Number of authorized Household systems	0 (State owned & run organization)
Financial share of producer responsibility	Packaging Tax
Operational responsibility for collection	National Coordination of Waste Management and Asset Management PLC (NHKV Plc) In case of household packaging waste
Operational responsibility for sorting	
Operational responsibility for marketing	n/a
Number of contributing companies	21 213
Income from obliged companies	123,32 million €
Coverage of the country (territory)	90%
Number of inhabitants	10 million
- with access to infrastructure	9,21 million
Costs per included inhabitant	13,38 €
Cost average per recovered ton	not published

*2018 data

HUNGARY

TOTAL AMOUNT OF PACKAGING PUT ON THE MARKET	1 389 kt
(thereof household packaging)	764 kt
HH PACKAGING PARTICIPATING IN THE SYSTEM	764 kt
TOTAL AMOUNT AND PERCENTAGE OF RECOVERY	745,12 kt = 55,1 %
Glass	50,07 kt = 35,3%
Paper	391,56kt = 74,9%
Plastics	192,18 kt = 56,4%
Composites	0,03 kt = 1,3%
Metal	62,63kt = 71,4% tinplate
TOTAL AMOUNT AND PERCENTAGE OF RECYCLING	614,26 kt = 45,4%
Glass	50,07 kt = 35,3%
Paper	352,8 kt = 67,5%
Plastics* *mechanical recycling	102,05 kt = 30%
Composites	0,03 kt = 1,3%
Metal	62,63kt=71,4% tinplate

TOTAL AMOUNT AND PERCENTAGE OF RECOVERY WITH INCINERATION	n/a
---	-----

TOTAL AMOUNT AND PERCENTAGE OF RECOVERY (RECYCLING + RECOVERY WITH INCINERATION)	n/a
--	-----



COLLECTION	
Glass	not published
Paper	not published
Plastic	not published
Beverage Cartons	not published
Metal packaging	not published

EXPRA MEMBERS

ISRAEL



TAMIR - Packaging Recovery Organization of
Israel Ltd (cc).Shenkar 18 st.
Herzliya. P.O.B 2078, Israel.
T: 972-9-8800046
F: 972-9-8866053
E: info@tmir.org.il
www.tmir.org.il

COUNTRY	ISRAEL
Name of the system	TAMIR Manufacturers Recycling Corporation In Israel Ltd
Founded	2011 (operation started in 2012)
Scope of business	All packaging except beverage containers under deposit
Number of authorized Household systems	2
Financial share of producer responsibility	100%
Operational responsibility for collection	yes
Operational responsibility for sorting	yes
Operational responsibility for marketing	yes
Number of contributing companies	1630
Income from obliged companies	25,5 million €
Coverage of the country (territory)	98%
Number of inhabitants	8,8 million
- with access to infrastructure	n/a
Costs per included inhabitant	2,9 €
Cost average per recovered ton	68 €

EXPRA MEMBERS

TOTAL AMOUNT OF PACK AGING PUT ON THE MARKET	434 K (Tamir)
(thereof household packaging)	224 kt
HH PACKAGING PARTICIPATING IN THE SYSTEM	330K
TOTAL AMOUNT AND PERCENTAGE OF RECOVERY	330 kt = 87 %
Glass <small>(a special case due to deposit collection of beverage glass containers)</small>	1,6kt = 6,5%
Paper	225kt = 114%
Plastics	42kt = 29,3%
Tinplate / Metal	15kt = 52,7%
Wood	34kt = 298%
Composites	0,03 kt = 1,3%

ISRAEL

TOTAL AMOUNT AND PERCENTAGE OF RECOVERY WITH INCINERATION	n/a
TOTAL AMOUNT AND PERCENTAGE OF RECOVERY (RECYCLING + RECOVERY WITH INCINERATION)	n/a



COLLECTION	
Glass	Purple Container stations <small>*no color separation</small>
Paper	Blue Container station <small>*collected with newspapers</small>
Plastics	Designated metal grid - cages <small>*via orange bins</small>
Beverage cartons	Orange containers
Metal packaging	Orange containers

EXPRA MEMBERS

ITALY



CONAI, Consorzio Nazionale Imballaggi

Via Pompeo Litta, 5

20122 Milano, ITALY

T: +39 (0) 2 54044 1

F: +39 (0) 2 54122648

E: international@conai.org

www.conai.org

COUNTRY	ITALY
Name of the system	CONAI
Founded	1997
Scope of business	All Packaging
Number of authorized Household systems	2
Financial share of producer responsibility	Additional charges
Operational responsibility for collection	Local Authority
Operational responsibility for sorting	Local Authority/Systems
Operational responsibility for marketing	CONAI respective Material Consortia
Number of contributing companies	792035
Income from obliged companies	770 million €
Coverage of the country (territory)	64% - 96%
Number of inhabitants	60,24 million
- with access to infrastructure	58 million = 96%
Costs per included inhabitant	13€
Cost average per recovered ton	70€

ITALY

TOTAL AMOUNT OF PACKAGING PUT ON THE MARKET	13 655 kt
(thereof household packaging waste)	n/a
HH PACKAGING PARTICIPATING IN THE SYSTEM	n/a
TOTAL AMOUNT AND PERCENTAGE OF RECOVERY	11 037kt = 81 %
Glass	2069 kt = 81%
Paper	4366 kt = 88%
Plastics	2006 kt = 87%
Composites	Included in the paper figures
Tinplate	399 kt = 82%
Aluminum	56 kt = 76%
TOTAL AMOUNT AND PERCENTAGE OF RECYCLING	9,560 kt = 70 %
Glass	2069 kt = 77%
Paper	3981 kt = 81%
Plastics	1054 kt = 45%
Composites	Included in the paper figures
Tinplate	399 kt = 82%
Aluminum	51 kt = 70%

TOTAL AMOUNT AND PERCENTAGE OF RECOVERY WITH INCINERATION	n/a
---	-----

TOTAL AMOUNT AND PERCENTAGE OF RECOVERY (RECYCLING + RECOVERY WITH INCINERATION)	n/a
--	-----



COLLECTION	
Glass	Stationary - mobile waste container
Paper	Stationary - mobile waste container* *together with newspapers
Plastics	Stationary - mobile waste container
Beverage cartons	Included in paper or plastic
Metal packaging	Included in plastic or glass

EXPRA MEMBERS

LUXEMBOURG



VALORLUX A.S.B.L.

9, rue Nicolas Brosius, L-3372 Leudelange

B.P. 26, L-3205 Leudelange , Luxembourg / Luxembourg

T: + 352/37 00 06-1

F: + 352/37 11 37

E: message@valorlux.lu

www.valorlux.lu

COUNTRY	Luxembourg
Name of the system	Valorlux
Founded	1995
Scope of business	Household packaging + commercial packaging from retailers
Number of authorized Household systems	1
Financial share of producer responsibility	Total costs for household packaging + financial support for commercial pack
Operational responsibility for collection	PMC: VALORUX; other packaging: local authorities
Operational responsibility for sorting	PMC: VALORUX; other packaging: local authorities
Operational responsibility for material sale	PMC: VALORUX; other packaging: local authorities
Number of contributing companies	1135
Income from obliged companies	6,61 million €
Coverage of the country (territory)	100%
Number of inhabitants	0,59 million
- with access to infrastructure	0,59 million
Costs per included inhabitant	11,01 €
Cost average per recovered ton	127 €

TOTAL AMOUNT OF PACKAGING PUT ON THE MARKET	78,562 kt
(thereof household packaging)	
HH PACKAGING PARTICIPATING IN THE SYSTEM	66,36 kt
TOTAL AMOUNT AND PERCENTAGE OF RECOVERY	57,83kt = 73,61%
Glass	23,7kt = 66,58%
Paper	18,6kt = 87,31%
Plastics	8,13kt = 59,22%
Composites	1,37kt = 100,15% (beverage cartons only)
Metals	4,19kt = 83,13%
Wood	0,853 kt = 70, 5%
TOTAL AMOUNT AND PERCENTAGE OF RECYCLING	56,84kt = 72,35%
Glass	23,7 kt= 66.58 %
Paper	18,6 kt= 87.31 %
Plastics	8,13kt=59.22 %
Composites	1,37kt = 100,15% (beverage cartons only)
Metals	4,19kt = 83,3%
Wood	0,853 kt = 70, 5%

LUXEMBOURG

TOTAL AMOUNT AND PERCENTAGE OF RECOVERY WITH INCINERATION	n/a
---	-----

TOTAL AMOUNT AND PERCENTAGE OF RECOVERY (RECYCLING + RECOVERY WITH INCINERATION)	n/a
--	-----



COLLECTION	
Glass	Collected via iglu stations, curbside and recycling stations mixed colors
Paper/cardboard	Together with newspapers in bundle collection door to door; cardboard only collected in recycling stations
Plastics Bottles & Beverage Cartons	Collection via blue bag door to door and recycling stations
Metal packaging	n/a
Other plastics	Collection usually via recycling stations run by local authorities

EXPRA MEMBERS



Pakomak - Asset packaging and packaging waste
 blv, Partizanski odredi, Porta Vlae blok 4,
 1000 Skopje,
 R. Macedonia
 T: 389 2 20 44 567
 E: info@pakomak.com.mk

R N MACEDONIA

COUNTRY	R N Macedonia
Name of the system	Pakomak
Founded	2010
Scope of business	All Packaging
Number of authorized Household systems	5
Financial share of producer responsibility	46%
Operational responsibility for collection	Pakomak
Operational responsibility for sorting	Public/private companies
Operational responsibility for marketing	Public/private companies
Number of contributing companies	860
Income from obliged companies	1,200,000 €
Coverage of the country (population)	75%
Number of inhabitants	2 million
- with access to infrastructure	1,5 million
Costs per included inhabitant	0,4€
Cost average per recovered ton	24 €

TOTAL AMOUNT OF PACKAGING PUT ON THE MARKET	108 kt total
(thereof household packaging)	n/a
HH PACKAGING PARTICIPATING IN THE SYSTEM	n/a
TOTAL AMOUNT AND PERCENTAGE OF RECOVERY	18,727 kt
Glass	3774 t = 35%
Paper	16,378 t = 105,3%
Plastics <small>*mechanical recycling</small>	3,200 t = 19,8% <small>* from licensed quantities</small>
Composites	6,319 t = 39%
Tinplate	n/a
Aluminum	682 t = 32,5%

R N MACEDONIA

TOTAL AMOUNT AND PERCENTAGE OF RECOVERY WITH INCINERATION	n/a
---	-----

TOTAL AMOUNT AND PERCENTAGE OF RECOVERY (RECYCLING + RECOVERY WITH INCINERATION)	n/a
--	-----



COLLECTION	
Glass	HoReCa
Paper	collected in containers* <small>*blue in public areas</small>
Plastics	collected in containers* <small>*yellow in public places</small>
Beverage Cartons	included in paper
Metal packaging	collected via container* <small>*yellow in public places</small>

EXPRA MEMBERS

MALTA*



GreenPak Cooperative Society Ltd
 St. John Street
 Fgura FGR1447, Malta
 T: (00356) 21 660233
 F: (00356) 21 803434
 E: info@greenpak.com.mt
www.greenpak.com.mt

COUNTRY	MALTA
Name of the system	GreenPak
Founded	2005
Scope of business	All Packaging
Number of authorized Household systems	2
Financial share of producer responsibility	Total costs
Operational responsibility for collection	GreenPak
Operational responsibility for sorting	GreenPak
Operational responsibility for marketing	GreenPak
Number of contributing companies	1100
Income from obliged companies	1,8 million €
Coverage of the country (territory)	70%
Number of inhabitants	0,434 million
- with access to infrastructure	0,311 million
Costs per included inhabitant	4,88 €
Cost average per recovered ton	157,13 €

* Data 2017

MALTA

TOTAL AMOUNT OF PACKAGING PUT ON THE MARKET	90 kt
(thereof household packaging)	67,5 kt

HH PACKAGING PARTICIPATING IN THE SYSTEM	12,8 kt
--	---------

TOTAL AMOUNT AND PERCENTAGE OF RECOVERY	9,7 kt = 58%
Glass	1,3 kt = 31%
Paper	5,1 kt = 79%
Plastics	1,6 kt = 45%
Composites	Included in paper
Tinplate	0,2 kt = 40%
Aluminum	0,2 kt = 44%

TOTAL AMOUNT AND PERCENTAGE OF RECYCLING	9,4 kt = 56%
Glass	1,3 kt = 31%
Paper	5,1 kt = 79%
Plastics *mechanical recycling	1,6 kt = 45%
Composites	Included in paper
Tinplate	0,2 kt = 40%
Aluminum	0,2 kt = 44%

TOTAL AMOUNT AND PERCENTAGE OF RECOVERY WITH INCINERATION	n/a
---	-----

TOTAL AMOUNT AND PERCENTAGE OF RECOVERY (RECYCLING + RECOVERY WITH INCINERATION)	n/a
--	-----



COLLECTION	
Glass	Green containers
Paper	Container stations *together with newspapers
Plastic	Container stations
Beverage Cartons	Included in paper
Metal packaging	Container stations

EXPRA MEMBERS



Grønt Punkt Norge

Visiting address: Karenslyst alle 9 A

Postal address: Postbok 91Skøyen,
0212 Oslo, Norway

T: +47 22121500

E: post@grontpunkt.no

www.grontpunkt.no

NORWAY

COUNTRY	Norway
Name of the system	Green Dot Norway
Founded	1997
Scope of business	All Packaging*
Number of authorized Household systems	Two competing systems
Financial share of producer responsibility	Vary for each material, estimated 85%
Operational responsibility for collection	Local Authority
Operational responsibility for sorting	The PRO
Operational responsibility for marketing	The PRO for national campaigns, the municipality for local information
Number of contributing companies	4437
Income from obliged companies	55 million €
Coverage of the country (territory)	national
Number of inhabitants	100% of 5,4 million
- with access to infrastructure	5,2 million
Costs per included inhabitant	8,3 €
Cost average per recovered ton	85€

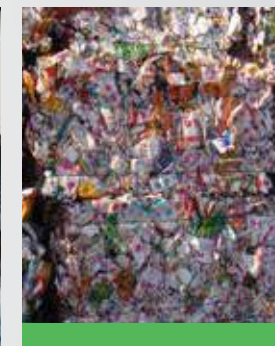
*except beverage containers under deposit
 **no authorization required, also two deposit systems - one for reusable glass and PET and one for recyclable PET and PE bottles and aluminum cans

TOTAL AMOUNT OF PACKAGING PUT ON THE MARKET	558 kt
(thereof household packaging)	n/a
HH PACKAGING PARTICIPATING IN THE SYSTEM	47,000 t for carton 20,000 t for beverage carton 85,000 t for plastic
TOTAL AMOUNT AND PERCENTAGE OF RECOVERY	n/a
Glass	85,000 t = 95%
Paper	209,801 t = 100%
Plastics	129,394 t = 100%
Composite	n/a
Tinplate	14,796 t = 100%
Aluminum	Included in tinplate
TOTAL AMOUNT AND PERCENTAGE OF RECYCLING	n/a
Glass	85,000 t = 95%
Paper	224,112 t = 106,8%
Plastics	52,388 t = 40,5%
Composites	n/a
Tinplate	13,472 t = 91,1%
Aluminum	Included in tinplate

NORWAY

TOTAL AMOUNT AND PERCENTAGE OF RECOVERY WITH INCINERATION	n/a
---	-----

TOTAL AMOUNT AND PERCENTAGE OF RECOVERY (RECYCLING + RECOVERY WITH INCINERATION)	n/a
--	-----



COLLECTION	
Glass	Collected via bring stations* *together with metals (more kerbside collection on the way)
Paper	Collected together with newspapers at home
Plastics	Collected via curbside collection and bring stations
Beverage Cartons	Included in paper
Metal packaging	Collected via bring stations together with glass

EXPRA MEMBERS



ECO-ROM AMBALAJE

51-55, 1 Mai Blvd.

Bucharest, 061629, Romania

T: +4021 413 08 44

F: +4021 413 08 57

E: contact@ecoromambalaje.ro

www.ecoromambalaje.ro

ROMANIA

COUNTRY	Romania
Name of the system	Eco-Rom Ambalaje
Founded	2003
Scope of business	All Packaging
Number of authorized Household systems	12
Financial share of producer responsibility	Net costs for municipal packaging waste and market-based prices for industrial-commercial packaging
Operational responsibility for collection	Local Authority and waste generators
Operational responsibility for sorting	Local Authority
Operational responsibility for marketing	Waste collectors
Number of contributing companies	642
Income from obliged companies	4,3 million €
Coverage of the country (territory)	national
Number of inhabitants	≈20 million
- with access to infrastructure	n/a
Costs per included inhabitant	n/a
Cost average per recovered ton	122,85€

TOTAL AMOUNT OF PACKAGING PUT ON THE MARKET	41,619 t
(thereof household packaging)	25,362 t
HH PACKAGING PARTICIPATING IN THE SYSTEM	61 %
TOTAL AMOUNT AND PERCENTAGE OF RECOVERY	25,246 t = 61%
Glass	6,439 t = 69%
Paper	10,102 t = 67% including drink cartons
Plastics	6,247 t = 58%
Composites	Included in paper
Tinplate	584 t = 102%
Aluminum	226 t = 23%
Wood	1,648 t = 35%
TOTAL AMOUNT AND PERCENTAGE OF RECYCLING	23,098 t = 56%
Glass	6,439 t = 69%
Paper	9,138 t = 60%
Plastics* *mechanical recycling	5,217 t = 48%
Composites	Included in paper
Tinplate	584 t = 102%
Aluminum	226 t = 23%
Wood	1,494 t = 31%

ROMANIA

TOTAL AMOUNT AND PERCENTAGE OF RECOVERY WITH INCINERATION	n/a
---	-----

TOTAL AMOUNT AND PERCENTAGE OF RECOVERY (RECYCLING + RECOVERY WITH INCINERATION)	n/a
--	-----



COLLECTION	
Glass	Green container stations
Paper	Blue container stations
Plastics	Yellow container stations and bags
Beverage Cartons	Yellow container stations and bags
Metal packaging	Yellow container stations and bags

EXPRA MEMBERS

SLOVAKIA



ENVI-PAK, a. s.
Galvaniho 7/B
821 04 Bratislava 2, Slovensko
T: +421 2 333 227 10
F: +421 2 335 200 10
E: www.envipak.sk
envipak@envipak.sk

COUNTRY	SLOVAKIA
Name of the system	ENVI-PAK
Founded	2003
Scope of business	All Packaging
Number of authorized Household systems	10
Financial share of producer responsibility	Full net cost system
Operational responsibility for collection	Local Authority
Operational responsibility for sorting	Local Authority
Operational responsibility for marketing	ENVI-PAK
Number of contributing companies	3106
Income from obliged companies	20,62 million €
Coverage of the country (territory)	46,40%
Number of inhabitants	5,445,087
- with access to infrastructure	2,526,492
Costs per included inhabitant	n/a
Cost average per recovered ton	n/a

SLOVAKIA

TOTAL AMOUNT OF PACK AGING PUT ON THE MARKET	491,582 t 233,690 t by ENVI-PACK
(thereof household packaging)	n/a

HH PACKAGING PARTICIPATING IN THE SYSTEM	n/a
--	-----

TOTAL AMOUNT AND PERCENTAGE OF RECOVERY	n/a
---	-----

Glass	28,985 t = 10,01%
Paper	76,894 t = 79,80%
Plastics	36,639 t = 54,31%
Composites	716 t = 20,61%
Metal	11,507 t = 58,40%
Wood	4,300 t = 49,76%

TOTAL AMOUNT AND PERCENTAGE OF RECYCLING	n/a
--	-----

Glass	25,985 t = 70,01%
Paper	76,894 t = 79,80%
Plastics* *mechanical recycling	33,003 t = 48,92%
Composites	549 t = 15,81%
Metal	11,507 t = 58,40%
Wood	3,889 t = 45%

TOTAL AMOUNT AND PERCENTAGE OF RECOVERY WITH INCINERATION	n/a
---	-----

TOTAL AMOUNT AND PERCENTAGE OF RECOVERY (RECYCLING + RECOVERY WITH INCINERATION)	n/a
--	-----



COLLECTION	
Glass	Bring and curbside collection
Paper	Bring and curbside collection *together with newspapers
Plastic	Bring and curbside collection
Beverage Cartons	Bring and curbside collection* *mostly together with plastic
Metal packaging	Bring and curbside collection* *mostly together with plastic

EXPRA MEMBERS



Slopak d.o.o.
Vodovodna cesta 100
1000 Ljubljana, Slovenia
T: +386 1 5600 250
F: +386 1 5600 260
E: www.slopak.si
slopak@slopak.si

SLOVENIA

COUNTRY	SLOVENIA
Name of the system	SLOPAK d.o.o.
Founded	2002
Scope of business	All Packaging
Number of authorized Household systems	6
Financial share of producer responsibility	Shared
Operational responsibility for collection	Local authorities & PROs
Operational responsibility for sorting	PROs
Operational responsibility for marketing	PROs
Number of contributing companies	682
Income from obliged companies	2,542,908 €
Coverage of the country (territory)	99,98%
Number of inhabitants	2,094,060
- with access to infrastructure	2,094,060
Costs per included inhabitant	n/a
Cost average per recovered ton	99,98€

no split on I& and HH

TOTAL AMOUNT OF PACKAGING PUT ON THE MARKET	35,822 t
(thereof household packaging)	
HH PACKAGING PARTICIPATING IN THE SYSTEM	n/a
TOTAL AMOUNT AND PERCENTAGE OF RECOVERY	n/a
Glass	8,358 t = 109%
Paper	3,836 t = 38%
Plastics	3,218 t = 31%
Composites	Included in plastics
Metals	1,647 t = 39%
Aluminum/Tinplate	Included in metals
TOTAL AMOUNT AND PERCENTAGE OF RECYCLING	n/a
Glass	8,358 t = 109%
Paper	3,751 t = 37%
Plastics* <small>*mechanical recycling</small>	2,573 t = 25%
Composites	Included in plastics
Metals	1,647 t = 39%
Tinplate	Included in metals
Aluminum	Included in metals

SLOVENIA

TOTAL AMOUNT AND PERCENTAGE OF RECOVERY WITH INCINERATION	n/a
---	-----

TOTAL AMOUNT AND PERCENTAGE OF RECOVERY (RECYCLING + RECOVERY WITH INCINERATION)	n/a
--	-----



COLLECTION	
Glass	Container stations
Paper	Container stations
Plastics	Container stations
Beverage Cartons	Together with plastic & metal pack.
Metal packaging	

EXPRA MEMBERS

SPAIN



Ecoembalajes España
 Paseo de la Castellana, 83-85 (Planta 11)
 28046 Madrid, Spain
 T: 00 34 / 91 567 24 03
 F: 00 34 / 91 598 06 24
 E: atencionalcliente@ecoembes.com
www.ecoembes.com

COUNTRY	SPAIN
Name of the system	Ecoembes
Founded	1996
Scope of business	Household Packaging excluding glass; commercial & industrial packaging only if collected by Municipalities
Number of authorized Household systems	1 for plastic/paper/metals + 1 for glass
Financial share of producer responsibility	Additional costs for separate collection and sorting
Operational responsibility for collection	Local Authority
Operational responsibility for sorting	Local Authority
Operational responsibility for marketing	EcoEmbres (via call for tender)
Number of contributing companies	12623
Income from obliged companies	642,812 million €
Coverage of the country (territory)	99,99%
Number of inhabitants	46,72 million
- with access to infrastructure	46,57(paper/cardboard), 46,61 (lightweight packing)
Costs per included inhabitant	13,76€
Cost average per recovered ton	401,9€

SPAIN

TOTAL AMOUNT OF PACKAGING PUT ON THE MARKET	n/a
(thereof household packaging Ecoembes)	1876,270kt = 85,2%

HH PACKAGING PARTICIPATING IN THE SYSTEM	n/a
--	-----

TOTAL AMOUNT AND PERCENTAGE OF RECOVERY	11599,5kt = 85,2%
Paper	653,4 kt = 83,8%
Plastics	688,3 kt = 88,7%
Composites	Included in paper
Tinplate	249,4 kt = 83%
Aluminum	Included in tinplate

TOTAL AMOUNT AND PERCENTAGE OF RECYCLING	1505,7 kt = 80,2%
Paper	631,7 kt = 80,2%
Plastics* *mechanical recycling	616,7 kt = 79,5%
Composites	Included in paper
Tinplate	249,4% = 83,1%
Aluminum	Included in tinplate

TOTAL AMOUNT AND PERCENTAGE OF RECOVERY WITH INCINERATION	n/a
---	-----

TOTAL AMOUNT AND PERCENTAGE OF RECOVERY (RECYCLING + RECOVERY WITH INCINERATION)	n/a
--	-----



COLLECTION	
Glass	Included in Ecovidrio section
Paper	Collected via container stations* *together with newspapers
Plastic	Container stations
Beverage Cartons	Collected together with metals and plastic
Metal packaging	Collected via container stations

EXPRA MEMBERS

SPAIN



ecovidrio

Ecovidrio
General Orda, 3 - 2. 28006 Madrid (Spain)
T: 00 34 91 411 83 44
E: info@ecovidrio.es
www.ecovidrio.es

COUNTRY	SPAIN
Name of the system	Ecovidrio *
Founded	1997
Scope of business	Glass packaging
Number of authorized Household systems	1 for plastic/paper/metals (Ecoembes) + 1 for glass (Ecovidrio)
Financial share of producer responsibility	Total Costs
Operational responsibility for collection	Local Entities/Ecovidrio
Operational responsibility for sorting	n/a
Operational responsibility for marketing	Local Entities/Ecovidrio
Number of contributing companies	+8000
Income from obliged companies	52 million €
Coverage of the country (territory)	99%
Number of inhabitants	47 million
- with access to infrastructure	99%
Costs per included inhabitant	1,24 €
Cost average per recovered ton	72,8€

* Data 2020

EXPRA MEMBERS

TOTAL AMOUNT OF PACKAGING PUT ON THE MARKET	n/a
(thereof household packaging)	n/a

HH PACKAGING PARTICIPATING IN THE SYSTEM	Horeca represents 48% of collection
--	-------------------------------------

TOTAL AMOUNT AND PERCENTAGE RECYCLING (VIA CONTAINER)	76.8% (official data Eurostat 2018)
---	--

Additional tons recycled (via other sources monitored by Ecovidrio, collaboration plans to collect and recycle glass from non-municipal channels): 297 tons (2015)

SPAIN

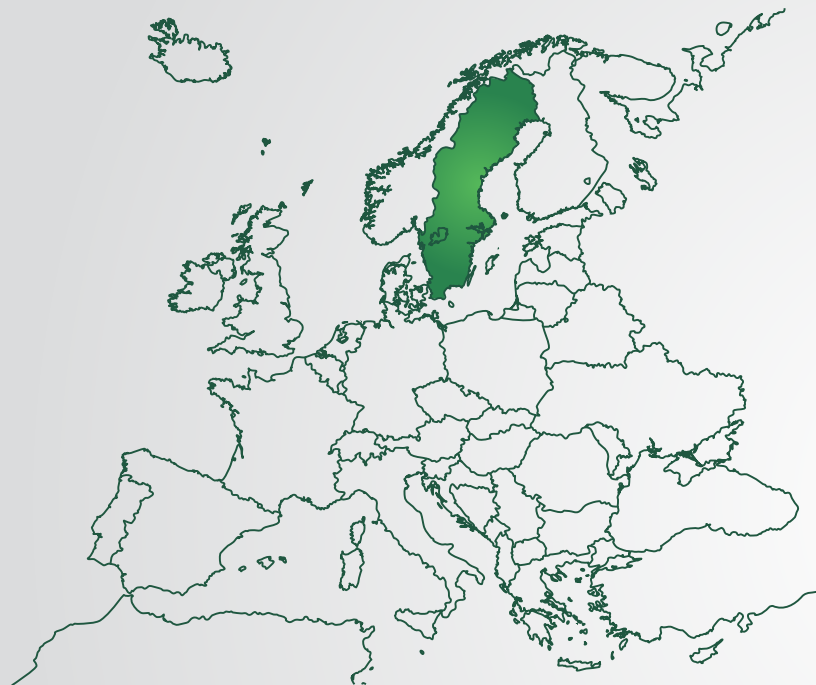
TOTAL AMOUNT AND PERCENTAGE OF RECOVERY WITH INCINERATION	n/a
---	-----

TOTAL AMOUNT AND PERCENTAGE OF RECOVERY (RECYCLING + RECOVERY WITH INCINERATION)	n/a
--	-----



COLLECTION	
Glass	Curbside containers* *no colour separation
Paper	n/a
Plastics	n/a
Beverage Cartons	n/a
Metal packaging	n/a

EXPRA MEMBERS



Förpacknings- och Tidningsinsamlingen (FTI)
 Box 17033, S-104 62 Stockholm Sweden
 (visiting address: Magnus Ladulåsgatan 63A, Stockholm)
 T: (+46) 8 566 144 00
 F: (+46) 8 566 144 44
 E: <mailto:repainfo@ftiab.se>
www.ftiab.se/english

SWEDEN

COUNTRY	SWEDEN
Name of the system	FTI
Founded	1994
Scope of business	All Packaging
Number of authorized Household systems	2 (no formal authorization)
Financial share of producer responsibility	100%
Operational responsibility for collection	FTI
Operational responsibility for sorting	FTI and its owners
Operational responsibility for marketing	Local authorities
Number of contributing companies	9,000
Income from obliged companies	80 million €
Coverage of the country (territory)	100%
Number of inhabitants	10 million
- with access to infrastructure	10 million
Costs per included inhabitant	8€
Cost average per recovered ton	n/a

SWEDEN

TOTAL AMOUNT OF PACKAGING PUT ON THE MARKET	approx. 1000 kt
(thereof household packaging)	n/a

(excluding alu cans and PET bottles that are covered by deposit scheme)

HH PACKAGING PARTICIPATING IN THE SYSTEM	not reported
--	--------------

TOTAL AMOUNT AND PERCENTAGE OF RECOVERY	n/a
Glass	217 kt = 93%
Paper	439% = 75%
Plastics	107 kt = 49%
Composites	included in paper
Tinplate & Aluminum	36 kt

TOTAL AMOUNT AND PERCENTAGE OF RECYCLING	n/a
Glass	n/a
Pape cartons	n/a
Plastics* *mechanical recycling	n/a
Composites	n/a
Tinplate	n/a
Aluminum	n/a

TOTAL AMOUNT AND PERCENTAGE OF RECOVERY WITH INCINERATION	n/a
---	-----

TOTAL AMOUNT AND PERCENTAGE OF RECOVERY (RECYCLING + RECOVERY WITH INCINERATION)	n/a
--	-----



COLLECTION	
Glass	Packaging of paper, carton, drink cartons, corrugated cardboard (newspapers and other Old News and Pams are collected in a separate stream)
Paper	
Plastics	
Metal	

EXPRA MEMBERS



Afvalfonds Verpakkingen

Afvalfonds Verpakkingen
Postbus 1266
2260 BG LEIDSCHENDAM
Overgoo 13
2266 JZ LEIDSCHENDAM
T +31 70 762 02 66
M +31 6 123 800 15

www.afvalfondsverpakkingen.nl

THE NETHERLANDS

COUNTRY	The Netherlands
Name of the system	Afvalfonds Verpakkingen
Founded	2012
Scope of business	All Packaging
Number of authorized Household systems	1
Financial share of producer responsibility	100%
Operational responsibility for collection	Municipalities (B2C) and companies (B2B)
Operational responsibility for sorting	Municipalities (B2C) and companies (B2B)
Operational responsibility for marketing	Municipalities (B2C) and companies (B2B)
Number of contributing companies	9000
Income from obliged companies	250,000,000 €
Coverage of the country (territory)	100%
Number of inhabitants	17,3 million
- with access to infrastructure	17,3 million
Costs per included inhabitant	14,45 €
Cost average per recovered ton	n/a (recovery is not measured)

TOTAL AMOUNT OF PACK AGING PUT ON THE MARKET		3,243 t
(thereof household packaging)		n/a
HH PACKAGING	PARTICIPATING IN THE SYSTEM	n/a (Is not measured)

TOTAL AMOUNT AND PERCENTAGE OF RECOVERY		n/a
Glass		n/a
Paper		n/a
Plastics		n/a
Composites		n/a
Tinplate		n/a
Aluminum		n/a

TOTAL AMOUNT AND PERCENTAGE OF RECYCLING		n/a
Glass		87%
Paper		91%
Plastics		57%
Composites		-
Metals		-
Aluminum		-
Wood		70%

THE NETHERLANDS

TOTAL AMOUNT AND PERCENTAGE OF RECOVERY WITH INCINERATION	n/a
--	-----

TOTAL AMOUNT AND PERCENTAGE OF RECOVERY (RECYCLING + RECOVERY WITH INCINERATION)	n/a
--	-----



COLLECTION	
Glass	100% separated (containers)
Paper	separated (retail), mixed with newsprint (offices)
Plastics	100% separated
Beverage Cartons	
Metal packaging	both separated and recovery out of the bottom ash of incinerated mixed waste

EXPRA MEMBERS

TURKEY



Cenap Sahabettin Sk. No: 94
Kosuyolu
Kadıköy - İstanbul / Türkiye

Tel: +90 (216) 428 78 90 - 94
Fax: +90 (216) 428 78 95

Web: <http://www.cevko.org.tr/>
E-mail: cevko@cevko.org.tr

COUNTRY	Turkey
Name of the system	CEVKO
Founded	1991
Scope of business	All Packaging
Number of authorized Household systems	4
Financial share of producer responsibility	Additional Costs
Operational responsibility for collection	Local Authority
Operational responsibility for sorting	Local Authority
Operational responsibility for marketing	Waste Management Company
Number of contributing companies	1785
Income from obliged companies	9,23 million €
Coverage of the country (territory)	32%
Number of inhabitants	82 million
- with access to infrastructure	26,75 million
Costs per included inhabitant	0,34 €
Cost average per recovered ton	16,54 €

TURKEY

TOTAL AMOUNT OF PACKAGING PUT ON THE MARKET	n/a
(thereof household packaging)	n/a

HH PACKAGING PARTICIPATING IN THE SYSTEM	not reported
--	--------------

TOTAL AMOUNT AND PERCENTAGE OF RECOVERY	557,7 kt
Glass	102,1 kt
Paper	217,7 kt
Plastics	162,1 kt
Composites	17,2 kt
Tinplate	18,5 kt
Aluminum	17,9 kt
Wood	22 kt

TOTAL AMOUNT AND PERCENTAGE OF RECYCLING	557, 7 kt
Glass	102,1 kt
Pape cartons	217,7 kt
Plastics* *mechanical recycling	162,1 kt
Composites	18,5 kt
Tinplate	17,9 kt
Aluminum	22 kt

TOTAL AMOUNT AND PERCENTAGE OF RECOVERY WITH INCINERATION	n/a
---	-----

TOTAL AMOUNT AND PERCENTAGE OF RECOVERY (RECYCLING + RECOVERY WITH INCINERATION)	n/a
--	-----

COLLECTION	
Glass	Container Stations, Bins, Bags
Paper	
Plastics	
Metal	